

THIS SHEET SHOWS THE ELEVATIONS OFF CENTERLINE LOOKING TO PORT & STARBOARD. THIS DRAWING IS TO GIVE YOU AN IDEA OF THE ARRANGEMENT ON BOTH SIDES OF THE BOAT AND THE HEIGHTS ABOVE THE SOLE FOR VARIOUS JOINERWORK ITEMS.

LIKE ALL JOINER WORK, YOU WILL WANT TO MOCK THINGS UP USING INEXPENSIVE PLYWOOD TO VERIFY FIT AND THE ARRANGEMENT.

SEE SHEET 1 AA, 1 AAA FOR ARRANGEMENT DIMENSIONS NOT SHOWN ON THIS SHEET.

NOTES ON ARRANGEMENT DIMENSIONS:

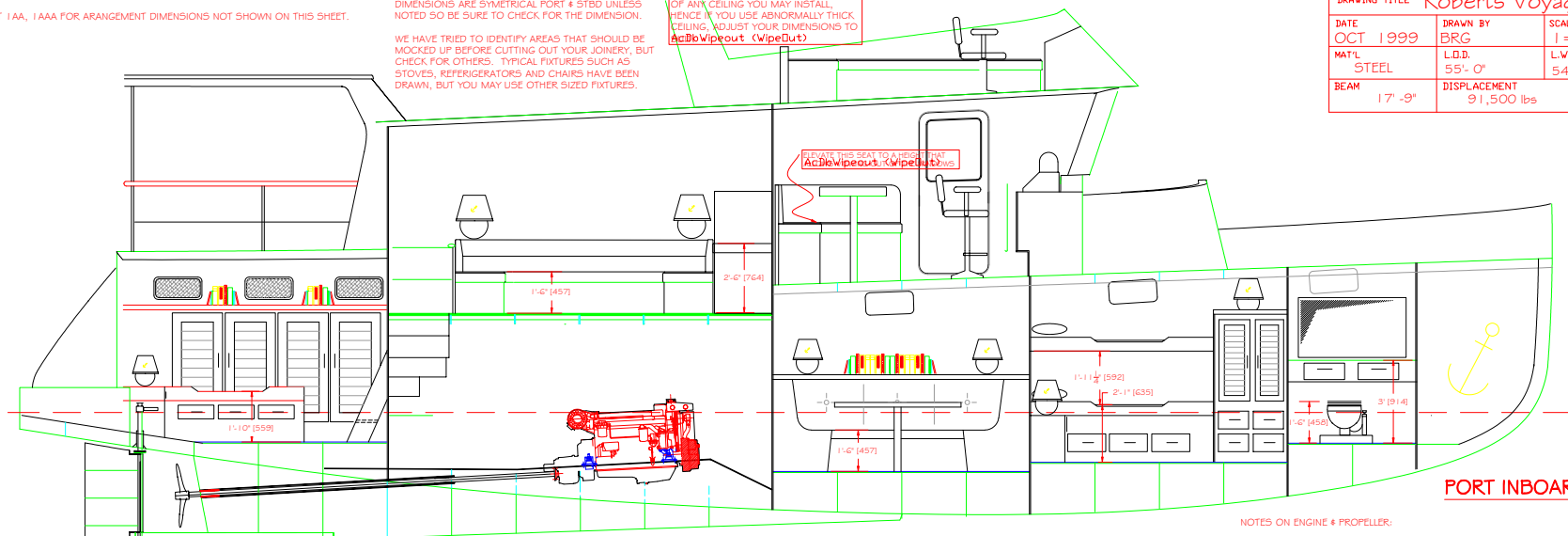
THE LABELS FOR VARIOUS ITEMS HAVE BEEN REMOVED ON THIS SHEET. REFER BACK TO THE ARRANGEMENT PLAN FOR IDENTIFICATION FOR ITEMS.

DIMENSIONS ARE SYMMETRICAL PORT & STBD UNLESS NOTED SO BE SURE TO CHECK FOR THE DIMENSION.

WE HAVE TRIED TO IDENTIFY AREAS THAT SHOULD BE MOCKED UP BEFORE CUTTING OUT YOUR JOINERY, BUT CHECK FOR OTHERS. TYPICAL FIXTURES SUCH AS STOVES, REFRIGERATORS AND CHAIRS HAVE BEEN DRAWN, BUT YOU MAY USE OTHER SIZED FIXTURES.

DIMENSIONS ARE PROVIDED IN SUCH A MANNER AS TO CALL OUT THE "IMPORTANT" DIMENSION AND LEAVE OTHERS TO FALL WHERE THEY MAY.

ALL DIMENSIONS ARE FROM THE INSIDE OF ANY CEILING YOU MAY INSTALL, HENCE IF YOU USE ABNORMALLY THICK CEILING, ADJUST YOUR DIMENSIONS TO ~~AcidWipeout~~ ~~WipeOut~~.



NOTES ON ENGINE & PROPELLER:

ENGINE SHOWN IS A LUGGER LG68T WHICH RATES BETWEEN 136 & 172 HP. THIS IS MORE THAN ENOUGH POWER FOR THE BOAT IN A DISPLACEMENT MODE. THE HULL FROM IS SUCH THAT SHE COULD BE USED IN A SEMI-DISPLACEMENT MODE AND COULD ACHIEVE SPEEDS OF BETWEEN 14 & 16 KN. THIS WILL REQUIRE MUCH MORE HORSEPOWER.

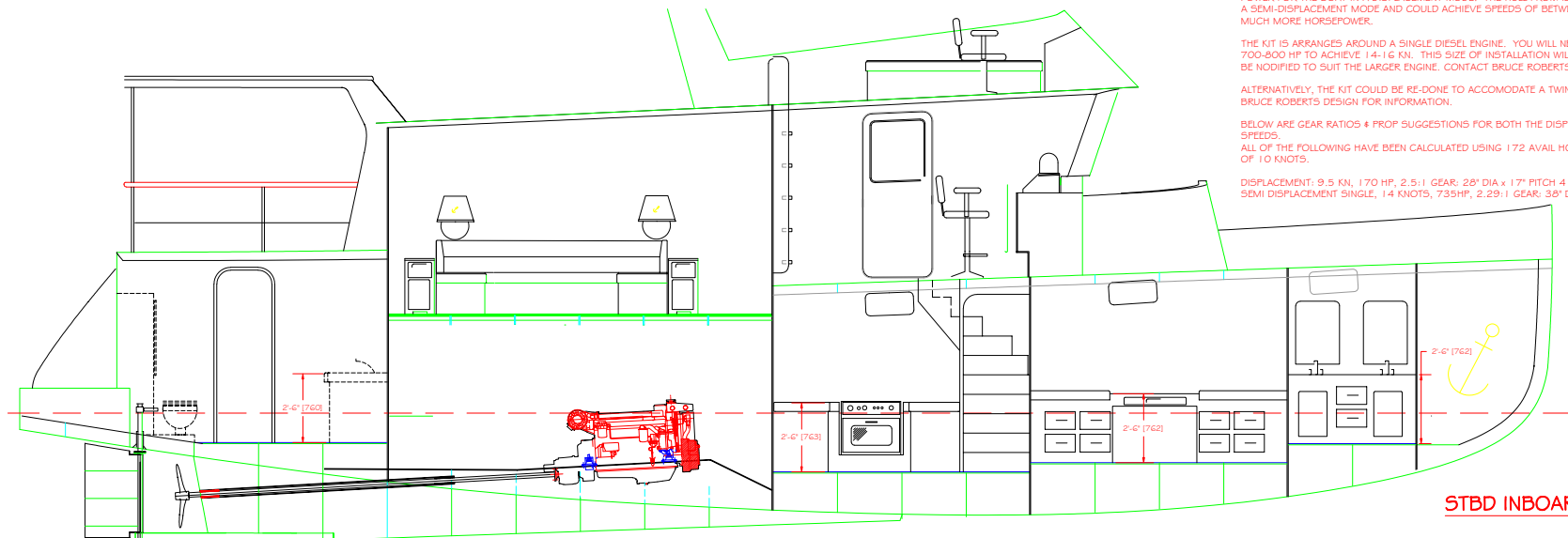
THE KIT IS ARRANGES AROUND A SINGLE DIESEL ENGINE. YOU WILL NEED TO INSTALL A DIESEL OF APPX 700-800 HP TO ACHIEVE 14-16 KN. THIS SIZE OF INSTALLATION WILL REQUIRE THE ENGINE BEARERS TO BE MODIFIED TO SUIT THE LARGER ENGINE. CONTACT BRUCE ROBERTS DESIGN FOR INFORMATION.

ALTERNATIVELY, THE KIT COULD BE RE-DONE TO ACCOMMODATE A TWIN ENGINE INSTALLATION. CONTACT BRUCE ROBERTS DESIGN FOR INFORMATION.

BELOW ARE GEAR RATIOS & PROP SUGGESTIONS FOR BOTH THE DISPLACEMENT & SEMI DISPLACEMENT SPEEDS.

ALL OF THE FOLLOWING HAVE BEEN CALCULATED USING 172 AVAILABLE HORSEPOWER AND A MAXIMUM SPEED OF 10 KNOTS.

DISPLACEMENT: 9.5 KN, 170 HP, 2.5:1 GEAR: 28" DIA x 17" PITCH 4 BLADED PROP (THIS IS SHOWN)
SEMI DISPLACEMENT SINGLE, 14 KNOTS, 735HP, 2.29:1 GEAR: 36" DIA x 24" PITCH 5 BLADED



Bruce Roberts design. Trawler Yacht kit				
DRAWING TITLE Roberts Voyager 55				
DATE	DRAWN BY	SCALE	SHEET #	
OCT 1999	BRG	1=24 1/2"	1 AAA	
MAT'L	L.D.D.	L.W.L.	DRAFT	
STEEL	55'-0"	54'-4"	5'-0"	
BEAM	17'-9"	DISPLACEMENT	POWER	
		91,500 lbs	150 - 200 hp	