

ENTERTAINMENT CENTER

NOTES ON ENGINE & PROPELLER:

ENGINE SHOWN IS A LUGGER L668T WHICH RATES BETWEEN 136 & 172 HP. THIS IS MORE THAN ENOUGH POWER FOR THE BOAT AS SHE IS A TRUE DISPLACEMENT FORM.

THE PROP APERTURE IS LARGE ENOUGH TO ACCOMODATE AN INSTALLATION USING A DEEP-RATIO MARINE GEAR. THE DEEP RATIO GEAR WILL GIVE BETTER EFFICIENCIES WITH LESS CAVITAION AND PROVIDE BETTER PULL.

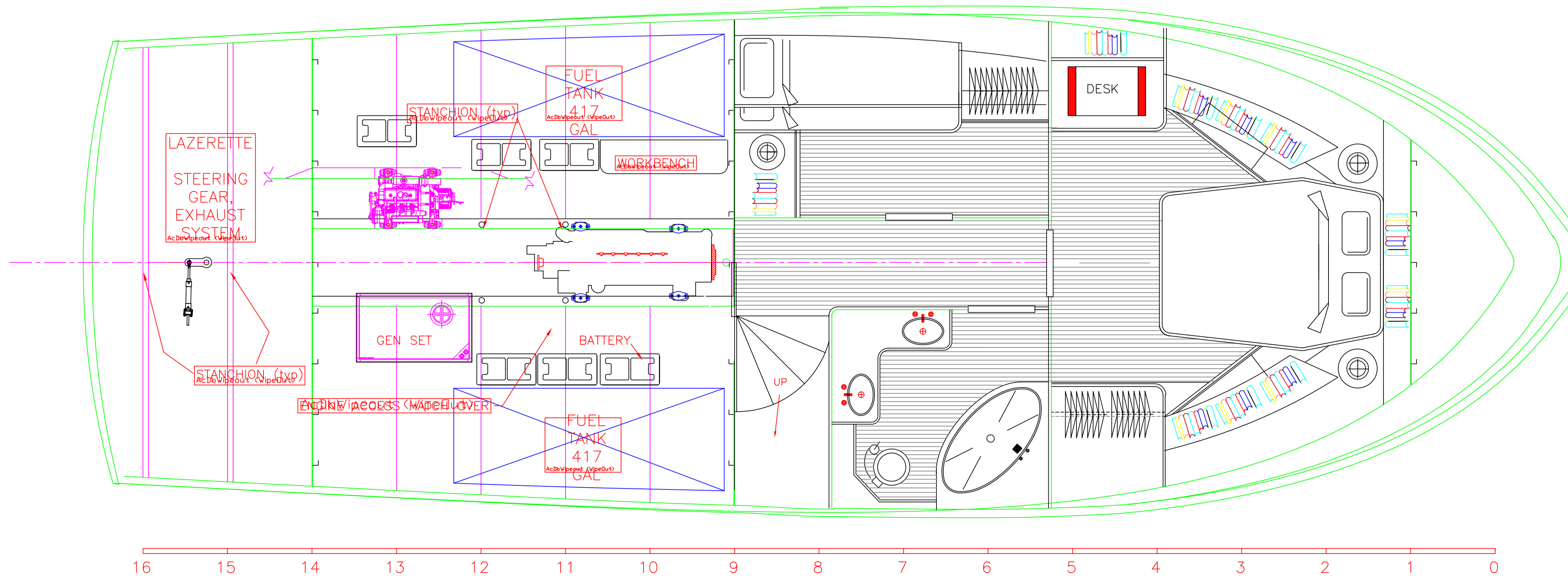
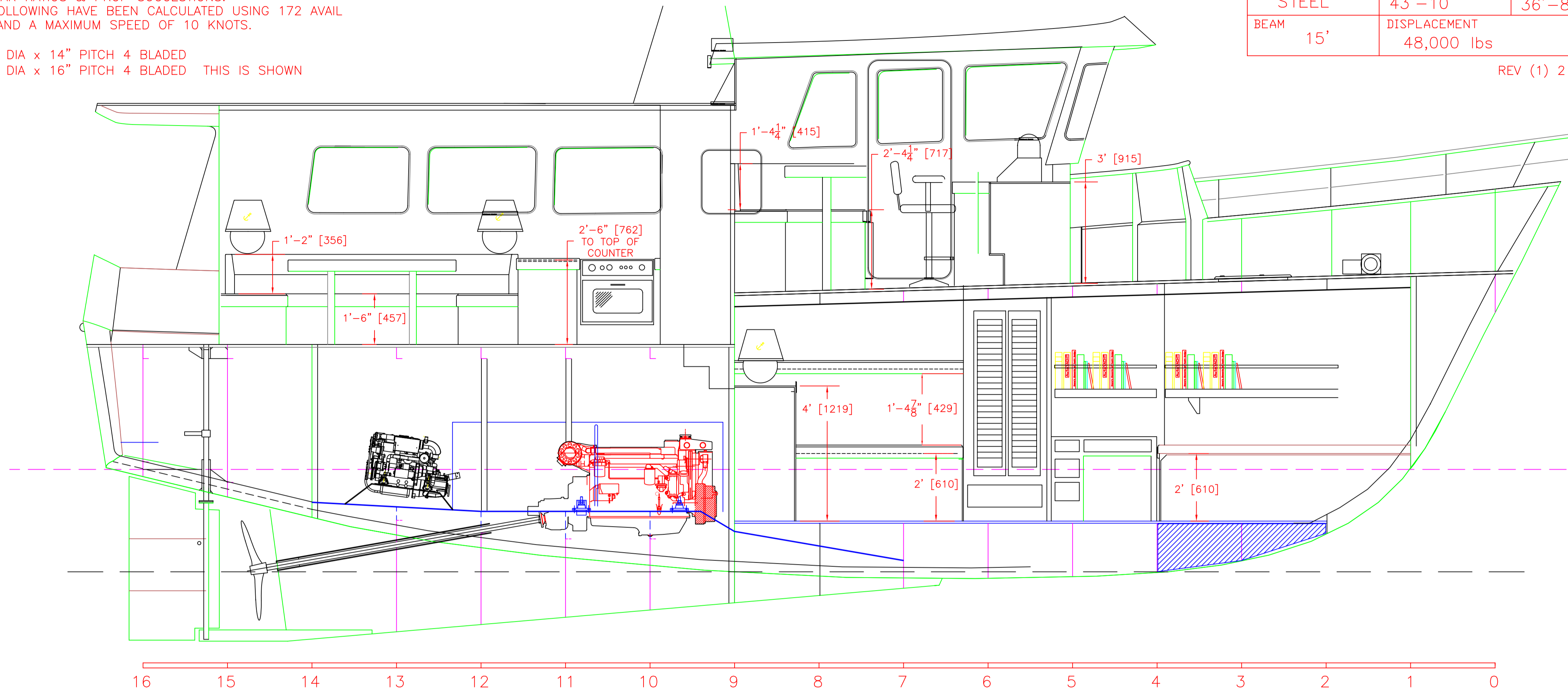
BELOW ARE GEAR RATIOS & PROP SUGGESTIONS. ALL OF THE FOLLOWING HAVE BEEN CALCULATED USING 172 AVAIL HORSEPOWER AND A MAXIMUM SPEED OF 10 KNOTS.

- 2:1 GEAR: 26" DIA x 14" PITCH 4 BLADED
- 3:1 GEAR: 36" DIA x 16" PITCH 4 BLADED THIS IS SHOWN

SEE SHEET 1BBB FOR ARANGEMENT DIMENSIONS NOT SHOWN ON THIS SHEET.

DRAWING TITLE Roberts Voyager 43			
DATE OCT 1999	DRAWN BY HMW	SCALE 1=24 1/2"	SHEET # 1CC
MAT'L STEEL	L.O.D. 43'-10"	L.W.L. 36'-8"	DRAFT 5'-0"
BEAM 15'	DISPLACEMENT 48,000 lbs	POWER 120 - 175 hp	

REV (1) 2 FEB 2000



DATE FEB 2000	DRAWN BY HMW	SCALE 1=24 1/2"	SHEET # 10CC
MAT'L STEEL	L.O.D. 43'-10"	L.W.L. 36'-8"	DRAFT 5'-0"
BEAM 15'	DISPLACEMENT 48,000 lbs	POWER 120 - 175 hp	

NOTES ON ARRANGEMENT DIMENSIONS:

THE LABELS FOR VARIOUS ITEMS HAVE BEEN REMOVED ON THIS SHEET, REFER BACK TO THE ARRANGEMENT PLAN FOR IDENTIFICATION FOR ITEMS.

DIMENSIONS ARE SYMETRICAL PORT & STBD UNLESS NOTED SO BE SURE TO CHECK FOR THE DIMENSION.

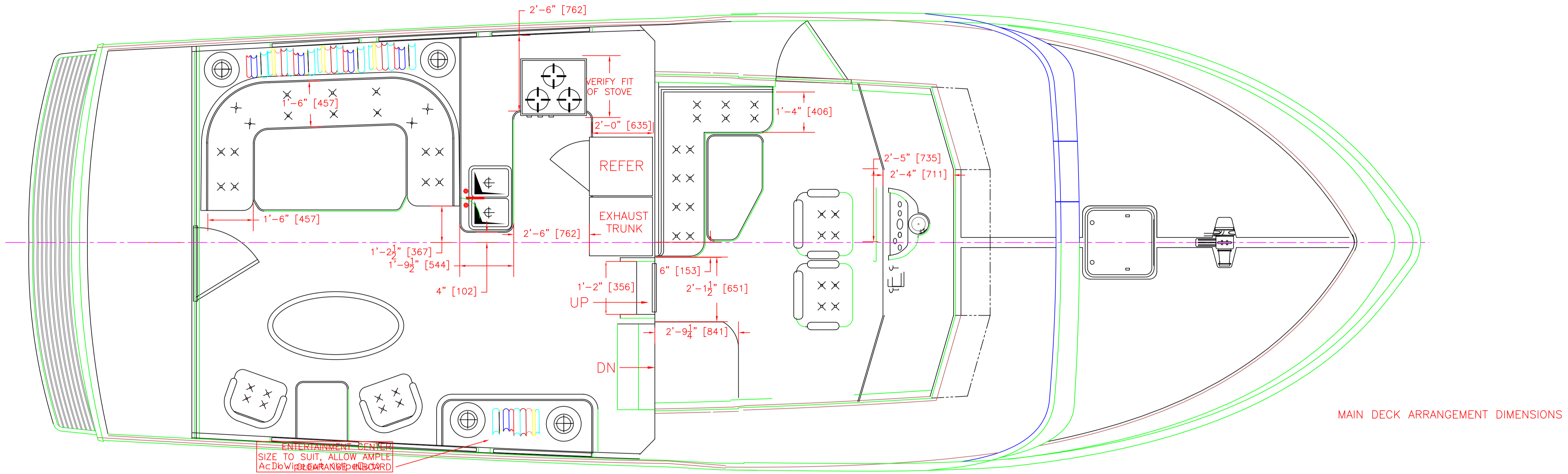
WE HAVE TRIED TO IDENTIFY AREAS THAT SHOULD BE MOCKED UP BEFORE CUTTING OUT YOUR JOINERY, BUT CHECK FOR OTHERS. TYPICAL FIXTURES SUCH AS STOVES, REFRIGERATORS AND CHAIRS HAVE BEEN DRAWN, BUT YOU MAY USE OTHER SIZED FIXTURES.

DIMENSIONS ARE PROVIDED IN SUCH A MANNER AS TO CALL OUT THE "IMPORTANT" DIMENSION AND LEAVE OTHERS TO FALL WHERE THEY MAY.

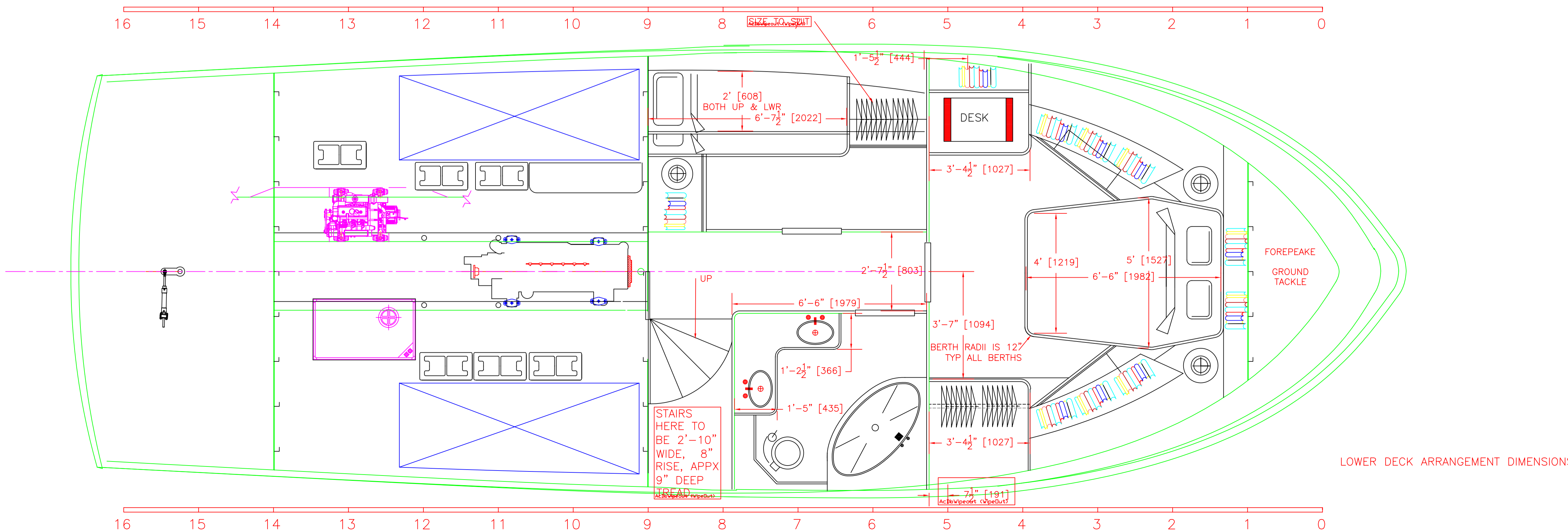
ALL DIMENSIONS ARE FROM THE INSIDE OF ANY CEILING YOU MAY INSTALL, HENCE IF YOU USE ABNORMALLY THICK CEILING, ADJUST YOUR DIMENSIONS TO SUIT.

NOTE THAT DIMENSIONS FOR THE ELEVATIONS ARE SHOWN ON SHEET 1BB.

REV(1)



MAIN DECK ARRANGEMENT DIMENSIONS



LOWER DECK ARRANGEMENT DIMENSIONS